



**UNGIWG**

United Nations **Geographic Information** Working Group

# **Task Group 2 Remote Sensing Progress Report**

Eighth UNGIWG Plenary Meeting  
Bangkok, Thailand, 28-30 November

TG Manager

Einar Bjorgo, UNITAR-UNOSAT



2. Task Group membership has been reviewed and now includes new members while some members no longer within the UN system or no longer following RS TG issues were deleted from the list.
4. The issue of a common UN layer in Google Earth is under discussion within Google Earth. Members are encouraged to continue to propose cases/layers.
6. Input has been provided to Google Earth regarding areas of priority, and some areas have indeed been populated with QuickBird imagery on Google Earth (CAR). The RS TG will be used to put forward such requests under a common UN umbrella.
8. The recently initiated RS TG Wiki mechanism will contribute to facilitate discussions. Several members see value of the Wiki mechanism for common discussions as supposed to the e-mail listserver.



3. The Wiki mechanism has recently (early November) been released for testing by the RS TG. Since this is a work in progress only parts of the foreseen content has already been included. However, it is foreseen that it will include all identified elements as per draft report as well as more forums and topics as needed.



## Task Group 2 - Remote Sensing

Welcome | Forums | Satellite sensors | My account | Administer | Log out

Home

### Forums

- [Post new forum topic.](#)

Forum	Topics	Posts	Last post
<b>GEO</b>			
Discussions on Group on Earth Observation (GEO) activities related to UNGIWG RS TG			
<b>GEO activities related to UNGIWG RS TG</b>			
Description of activities UNGIWG RS TG members are carrying out in the context of GEO	0	0	n/a
<b>GEO general information</b>			
General information and link to GEO	1	1	11 weeks 6 days ago by <b>EinarBjorgo</b>
<b>GEO members in UNGIWG RS TG</b>			
List of UNGIWG RS TG members in GEO	2	2	2 weeks 5 days ago by <b>EinarBjorgo</b>
<b>Imagery purchase and availability</b>			
Purchase mechanisms, imagery discounts and overview of existing high resolution imagery scenes purchased within the UN system.			
<b>Discount agreements</b>			
Agreements within the United Nations system for discounted imagery.	2	2	1 day 1 hour ago by <b>EinarBjorgo</b>
<b>Image availability</b>			
Google Earth interface on geographic location of high resolution satellite	1	1	1 day 1 hour ago

Search

Fly To: Find Businesses Directions  
Fly to e.g., San Francisco

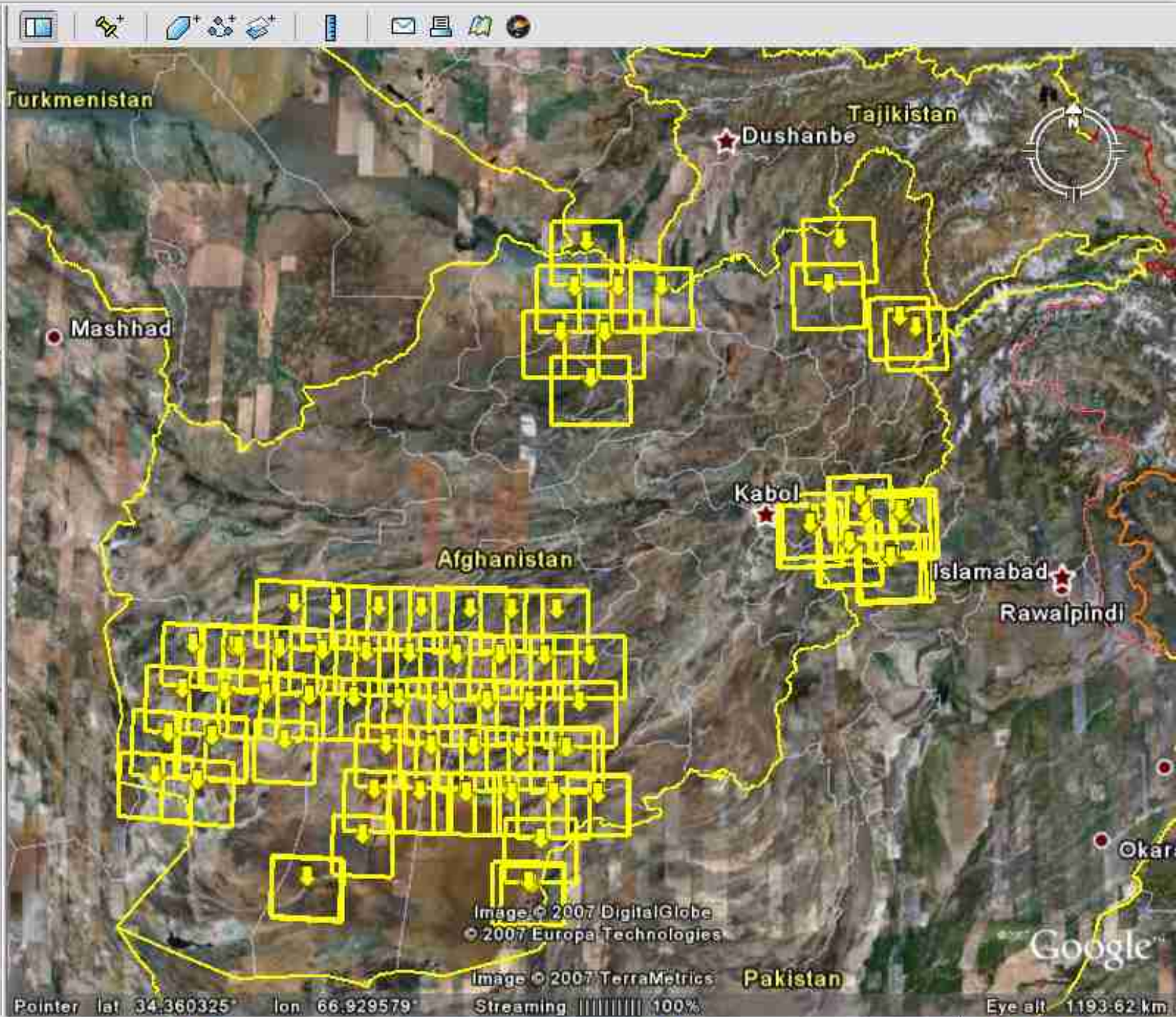
Places Add Content

- My Places
- UNOSAT:
  - UNOSAT-Ikonos imagery
  - UNOSAT-QuickBird Imagery
  - UNOSAT-Spot Imagery
- Other
- GDACS - Indonesia earthqu
- OperationsFlow

Layers

View: Core

- Primary Database:
  - Terrain
  - Geographic Web
  - roads
  - Traffic
  - Weather
  - 3D Buildings
  - Borders and Labels



Search

Fly To: Find Businesses Directions  
Fly to e.g., San Francisco

Places Add Content

- My Places
- UNOSAT-QuickBird Imagery
- UNOSAT-QuickBird Imagery
- UNOSAT-Spot Imagery
- Other
- GDACS - Indonesia earthquake
- OperationsFlow

Layers

View: Core

- Primary Database
- Terrain
- Geographic Web
- roads
- Traffic
- Weather
- 3D Buildings
- Borders and Labels

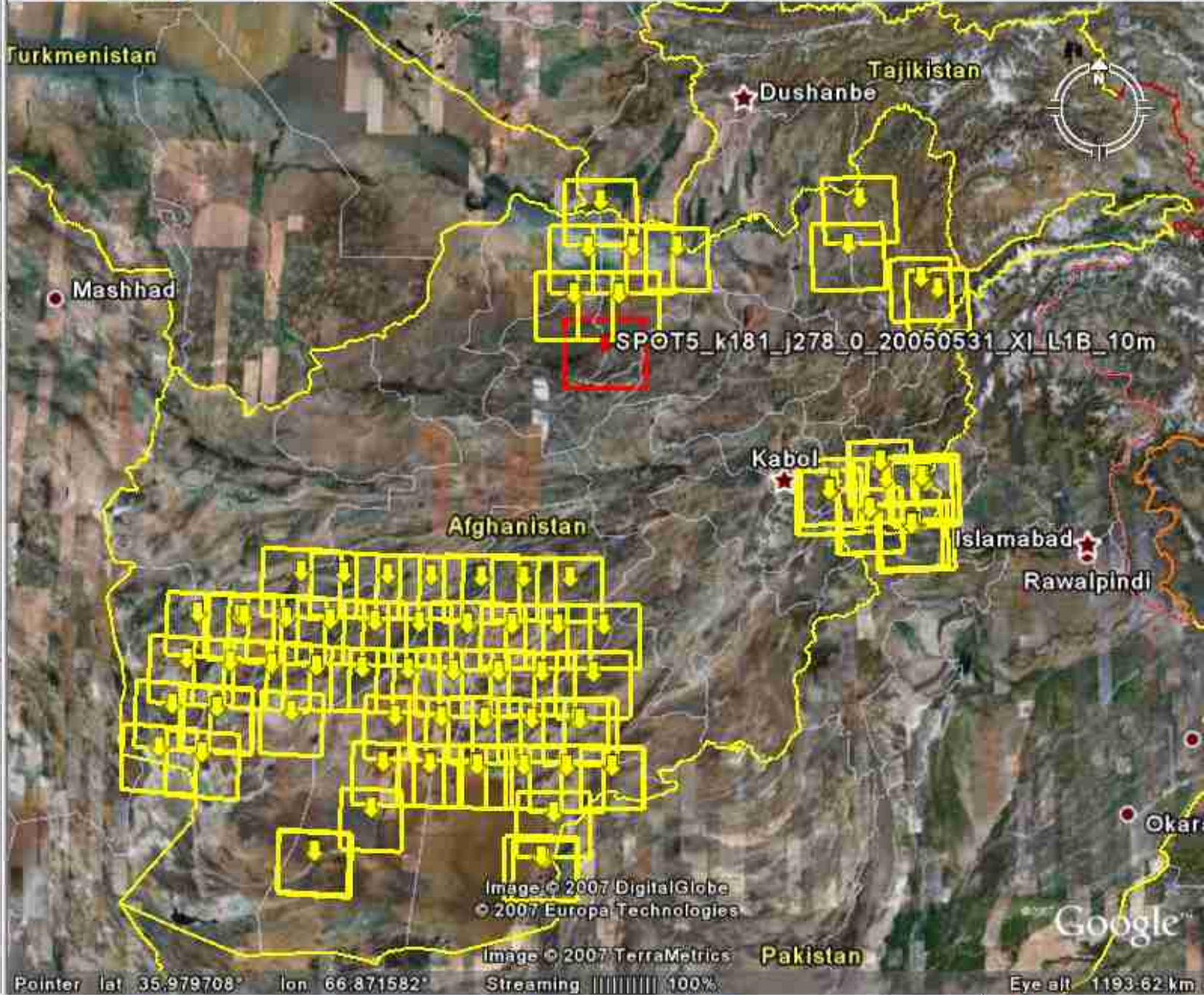


Image © 2007 DigitalGlobe  
© 2007 Europa Technologies

Image © 2007 TerraMetrics  
Streaming 100%

Pointer lat 35.979708° lon 66.871582°

Eye alt 1193.62 km

Search

Fly To: Find Businesses Directions  
Fly to e.g., San Francisco

Places Add Content

- My Places
- UNOSAT
- UNOSAT-Ikonos imagery
- UNOSAT-QuickBird Imagery
- UNOSAT-Spot imagery
- Other
- GDACS - Indonesia earthquake
- OperationsFlow

Layers

View: Core

- Primary Database
- Terrain
- Geographic Web
- roads
- Traffic
- Weather
- 3D Buildings
- Borders and Labels



**SPOT5\_k181\_j278\_0\_20050531\_XI\_L1B\_10m**

**Image File**

Acquisition Date	2005-05-31
Abstract	Spot5 satellite image of k181_j278 in Afghanistan
Supplemental Information	Scene ID 51812780505310646031J
Purpose	Support to humanitarian operations and/or development
Number of dimension	2
Row size	6034
Column size	7956

**Geographic informations**

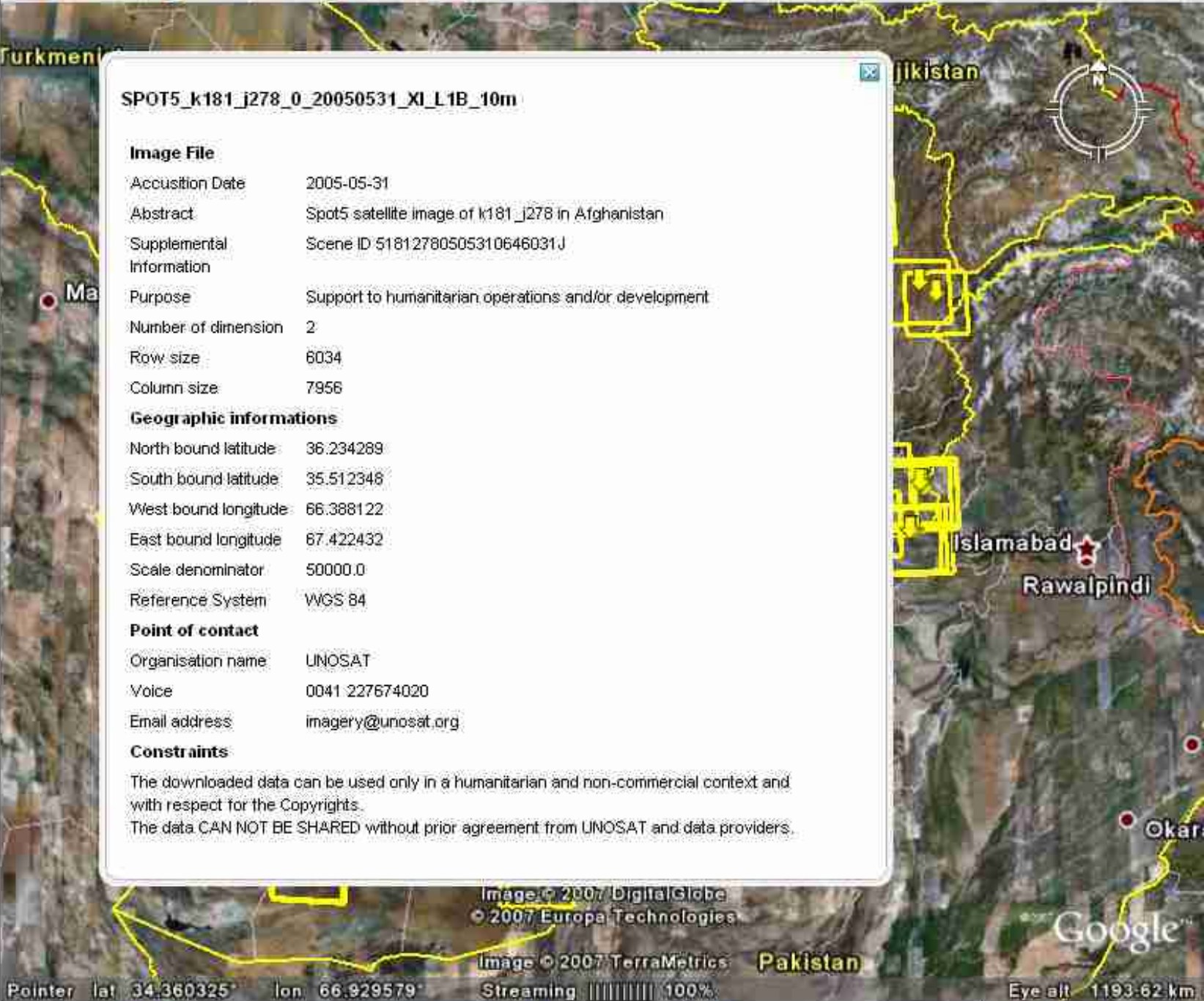
North bound latitude	36.234289
South bound latitude	35.512346
West bound longitude	66.388122
East bound longitude	67.422432
Scale denominator	50000.0
Reference System	WGS 84

**Point of contact**

Organisation name	UNOSAT
Voice	0041 227674020
Email address	imagery@unosat.org

**Constraints**

The downloaded data can be used only in a humanitarian and non-commercial context and with respect for the Copyrights.  
The data CAN NOT BE SHARED without prior agreement from UNOSAT and data providers.





## UN field offices input (OCHA, UNHCR, FAO and WFP):

- RS TG should advocate for online web mapping services and inclusion of specific remote sensing data on client side (e.g. WCS), allowing users to utilize imagery and imagery-derived vectors through online applications
- RS TG promote/facilitate mechanism allowing to draw area of interest and query for available data. Explore systems at DPKO, ITHACA, others
- Advocating for production of easy to use A4 greyscale maps and atlases for field use
- Strong support for Google Earth interface of available very high resolution imagery to UN community



- Strong support for coordination of populating Google Earth with very high resolution imagery over areas of specific interest to UN field offices
- RS TG to work closely with UNSDI initiative to ensure data access in standard formats, in particular timely imagery derived data
- Working with imagery data in the field is less useful due to file size and expertise needed for analysis, this is a lessons learned for the RS TG to consider
- RS TG should foster closer communication with the field in order to further improve the use of remote sensing data



## *In the context of the UNSDI proposed implementation process*

- Focus on facilitating access to information and RS data, including derived data, to field actors through interoperable systems.
- Further increase involvement of UN field actors in RS TG as recent positive developments have indicated a strong interest for this. Identified as a specific priority for the RS TG in 2008.
- Active use of Wiki by RS TG members, including new forums and topics as needed.
- Populate database on available very high resolution imagery using GeoNetwork standard and then converting to Google Earth files for easy access of information.
- Continue to put forward areas of common interest for populating Google Earth with very high resolution imagery.
- Response to sudden onset disasters have seen a strong increase in terms of remote sensing within the UN (Space Charter and other mechanisms). Specific discussion forum on Wiki to put forward common UN needs and positions. Continued awareness raising of opportunities from the International Charter “Space and Major Disasters” Charter and mechanisms in place to ensure imagery derived maps are disseminated on a timely basis to UN agencies.